

---

**SERVICE BULLETIN – Standard Rolling Roof Rig Base Assembly**

---

SECTION I  
GENERAL INFORMATION

In an effort to assure the safety of, and to continuously improve the quality of our products, we at Sky Climber conduct internal quality audits and request feedback from our customers on their experiences using our products. Based on information generated from these activities, we have introduced a product concern with the Standard Rolling Roof Rig (RRR) 154-24-02 Base Weldment.

SECTION II  
PLANNING INFORMATION

BACKGROUND: A customer reported that a weld broke on one side of a rolling roof rig while under load at a job site.



CURRENT INFORMATION: The supplied pictures indicate that a junction weld between one of the Bottom Weldment half and the DOM tube was only welded on 3 sides of the junction. All four connection joints of the 2 base halves and the center DOM tube should be welded on all 4 sides. NOTE: Other pieces within the base weldment half may be welded on only 3 sides per the 154-24-03 print.

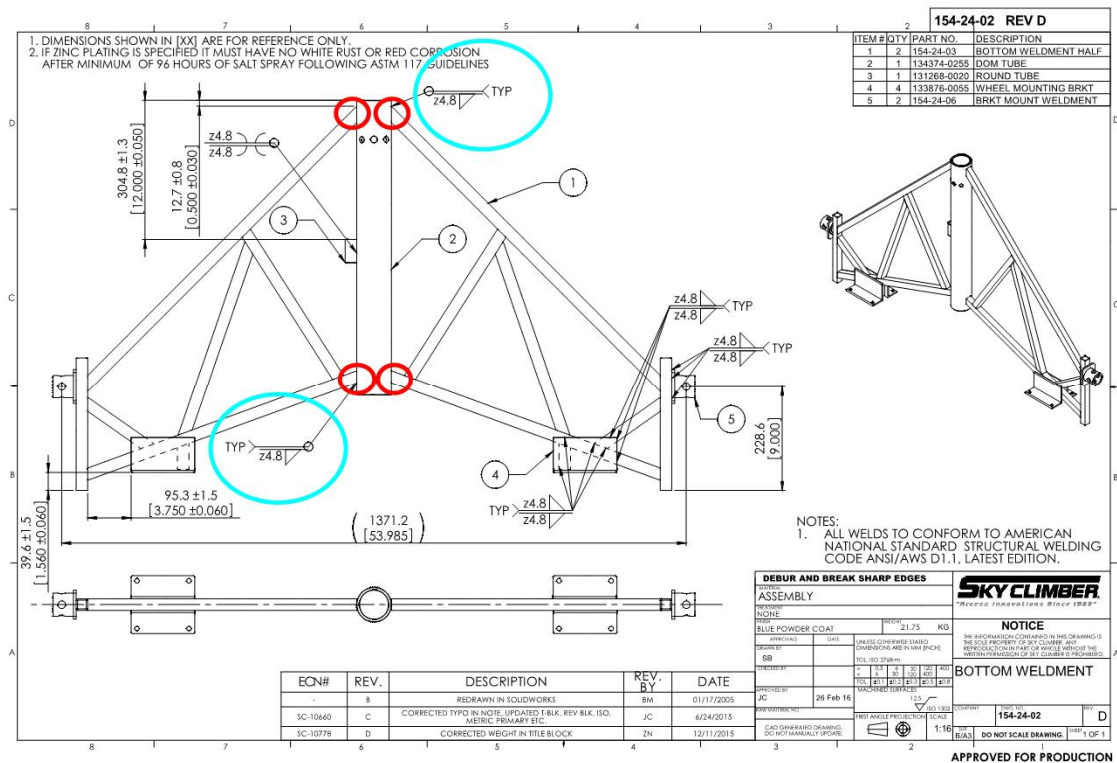
PRODUCTS AFFECTED: All Standard RRR Base Weldments.

**PURPOSE:** To identify a product concern, and specify the actions required to remedy the issue.

**ISSUE:** Inspect the 4 connection welds on all Standard RRR Base weldments currently in service within your fleet.

**COMPLIANCE:** **MANDATORY** – The 4 weld connections indicated in the drawing below, must be welded continuously around on all 4 sides. If not, the unit should be removed from service and returned to Sky Climber for rework or replacement.

**REFERENCE:** Use drawing 154-24-02 Rev.D to locate and identify locations for inspection. Joints for inspection are circled in **Red**.



**MAN HOURS:** Approximately 5 minutes to inspect all 4 suspect joints. Additional time required if the unit must be removed from service depending on location. (In a warehouse or currently in service at a project site).

**TOOLS REQUIRED:** None

**MATERIAL LIST:** None

### SECTION III

#### ACTION TO BE TAKEN:

1. Locate and visually inspect the 4 junction welds as indicated in the drawing above.
2. If any of the 4 junctions appear to not be welded completely around all 4 sides, red tag the weldment and remove from service as soon as possible.
3. For units in the field, replace all suspect weldments with a known good replacement.
4. Photograph the suspect weldment and call Sky Climber Customer Service to order a replacement weldment.
5. Sky Climber may issue a Return Authorization number to return unit for rework or have you scrap and replace depending on the apparent age and condition of the weldment. Sky Climber will seek replacements from our supplier who in turn will ask for payment of the scrap value of destroyed units.
6. Replacement units may be new or reworked units at Sky Climber's discretion.

QUESTIONS: Please direct any questions related to this matter to Sky Climber, LLC Customer Service or Technical Service at 1-800-255-4629.